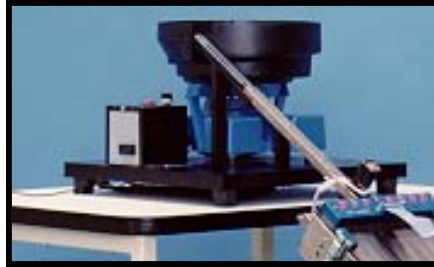


Model 5000 Options

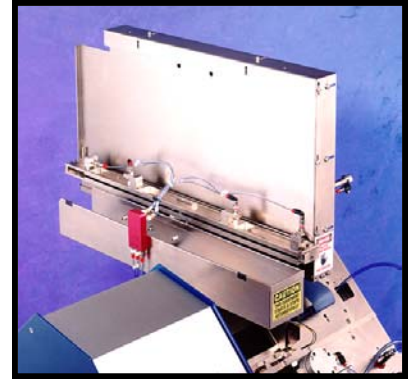
Input Options



**Octoloader 3 to 15 tubes
8 tubes standard**

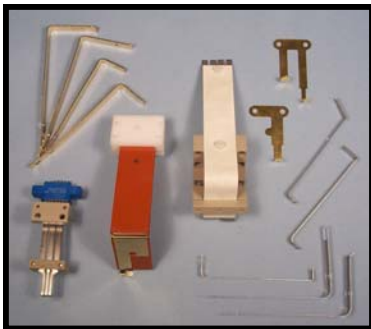


Bowl feed

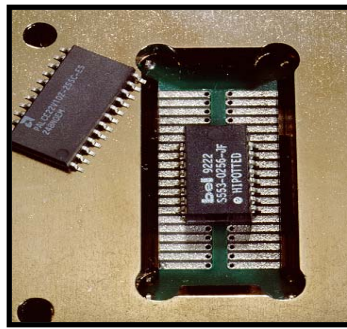


Automatic tube loader

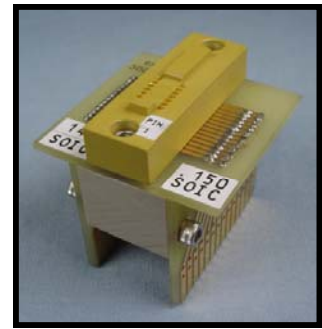
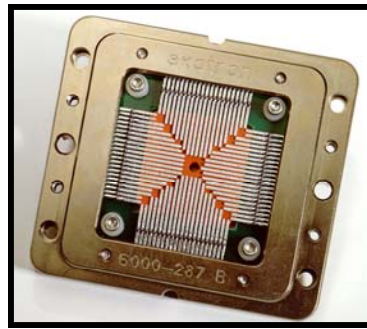
Contact Options



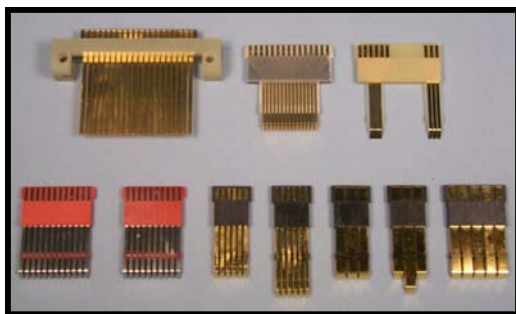
Custom Power



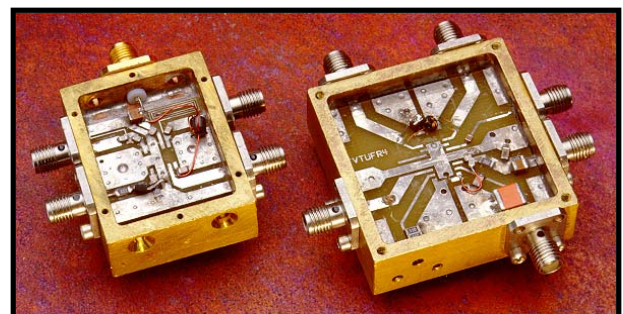
Universal PI SOIC, SSOIC, PLCC



"Pogo pin" type



Standard & custom DIP / SIP



**Exatron Particle Interconnect (PI)
Application specific RF contacts
Please see PI brochure for details**

Output Options



Standard 8 tube output
shown with Exatron metal tubes



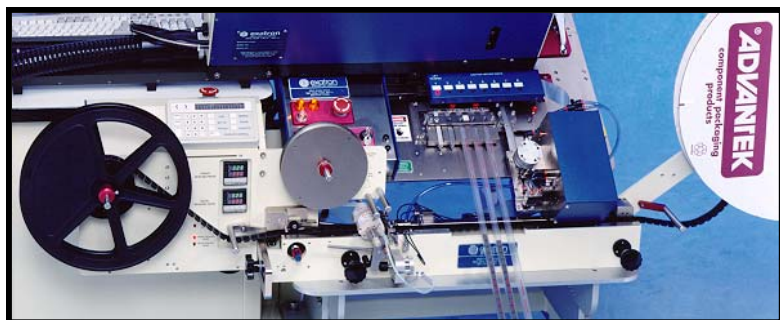
“Wide Sort” for larger devices/tubes



Bucket sort



Output Tray



Model 1050 Tape & Reel