



# Model 902

## Pick & Place Handler

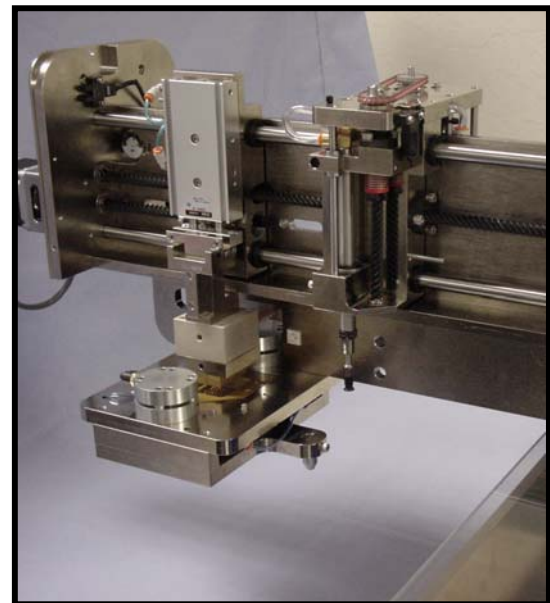
Exatron now offers a bench top Pick & Place Handler: the Model 900 series. The Model 902 is an efficient, dual tray; PC controlled Pick & Place Handler. It is capable of handling components in dual JEDEC and/or non-JEDEC trays and can be configured with up to 16 test sites with hot/cold testing. The handler offers a wide variety of field upgradeable options, including: thermal test, label application, de-tape input, tape output, tube input and/or output, and 2D/3D/mark inspection. The Model 902 is very versatile and can be customized for most small pick & place applications.



Model 902-4 shown. 2 trays. 4 test sites

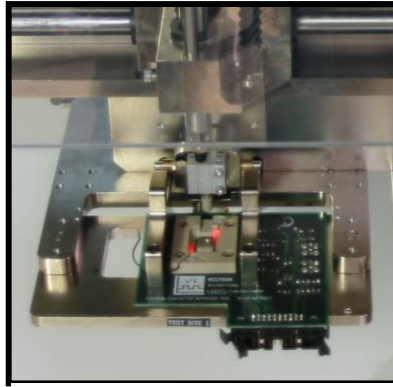
The Model 902 Handler incorporates an internal PC with "What You See Is What You Get" Windows based software. An operator can be fully trained to run the system in less than two hours. Simply use the on-screen jog buttons to make all mechanical adjustments with amazing accuracy. All axes are driven by encoded servomotors to ensure quick and precise component handling.

- **Dual JEDEC or non-JEDEC Trays**
- **Accurate device placement without the need for expensive and hard to set up cameras**
- **1 RF test site to up to 16 memory test sites**
- **+155° C Hot and/or -55° C Cold thermal option**
- **Tray/tube/tape/bowl input - Tray/tube/tape/bulk output**
- **Bench top with small foot print**
- **Intelligent Encoded Servo Motors (no steppers)**
- **Modem with PC Anywhere for remote service and software updates**
- **"WYSIWYG" software, built-in PC, CDROM, smart power supply, and flat panel monitor**
- **Safety cover, interlocks, and 3 color light pole**
- **ESD safe and CE mark**



Thermal option

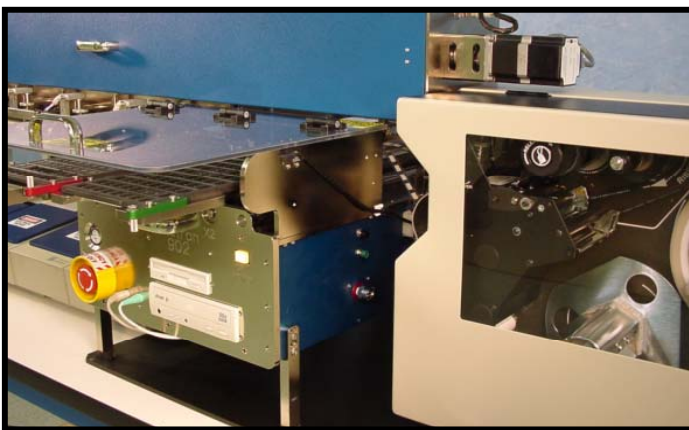
# Model 902 Options



Multiple RF test sites



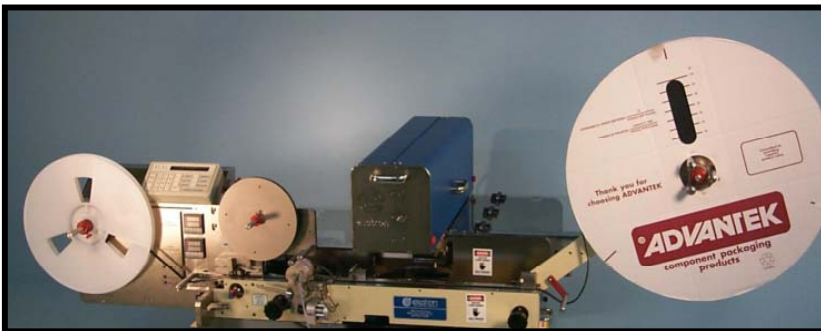
Direct dock programmer(s)



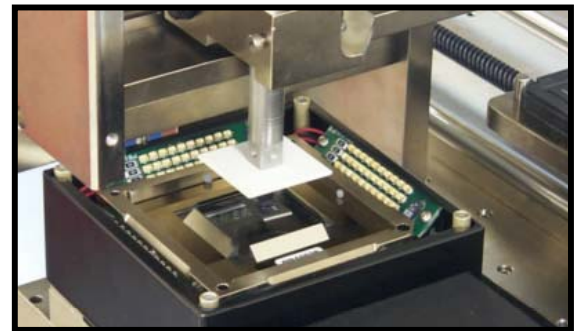
Print & Apply Labeler



Tube in & out option



Tape in & out option (see Model 1080 data sheet)



2D & 3D Lead and BGA inspection

Size: up to 60" W, 37" D, 24" H  
Weight: up to 150 pounds  
Power: 100/240 VAC, 50/60 Hz  
80 PSI dry/clean air required  
Bench top operation  
1-year factory warranty