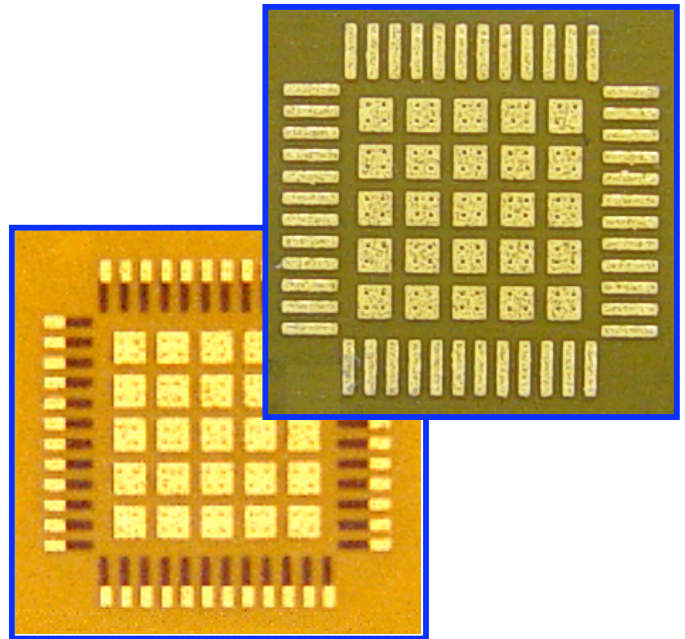


DUO

Compliant PI Interposers

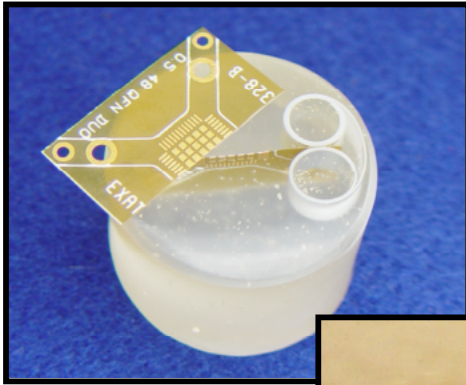
Unique features:

- Allows for up to 0.004"/0.1mm of mechanical compliance
- Particle Interconnect contact surface, top & bottom
- MLF, QFN, LCC Leadless Packages to 0.4mm pitch
- Ideal for RF Test applications
- Gerber-controlled foot print
- Exatron US Patent 6,703,851
- Brings "rocker socket"-ruined DUT test boards back to life!
- Total thickness under 0.010"/0.3mm
- -70° C to +200° C temperature range
- Long life: 100K hits minimum
- Teflon, Kapton, FR-4 material choices



Our Diamond Particle Interconnect (PI) contacts are ideally suited for interconnect between surface mount devices and load boards, testers, programmers, as well as other repeat-insertion applications. Exatron builds both rigid PCB and flex circuit (interposer) test sockets. "Leaded" devices such as SOIC, SSOIC, PLCC, QFP, work well on either rigid PCB or interposer-style sockets. Leadless devices, whose contact pads lack mechanical compliance, such as MLF, LCC, QFN, have been candidates for interposer-style sockets. Until now, these have been only moderately successful. In some cases a conductive elastomer was needed to provide the necessary compliance, but with lifespan and electrical performance drawbacks. With the new DUO interposer socket, Exatron provides an elegant solution to the mechanical compliance problem and maintains the best electrical performance of any socket available today.

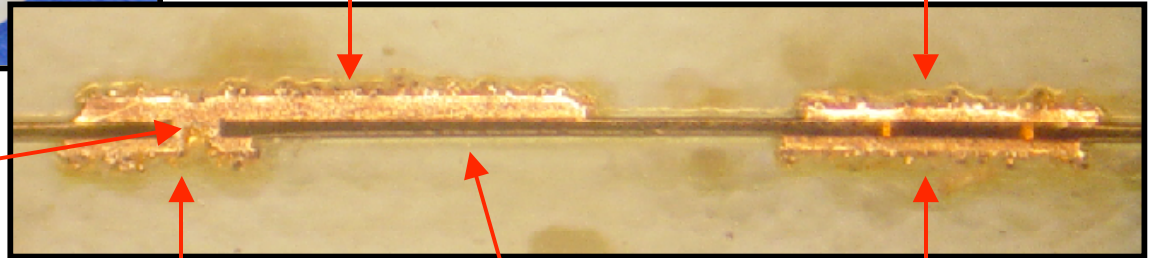
DUO Interposer Cross Section



Top side lead contact plated to 3 oz. Copper

Top side ground slug contact plated to 2 oz. Copper

Via



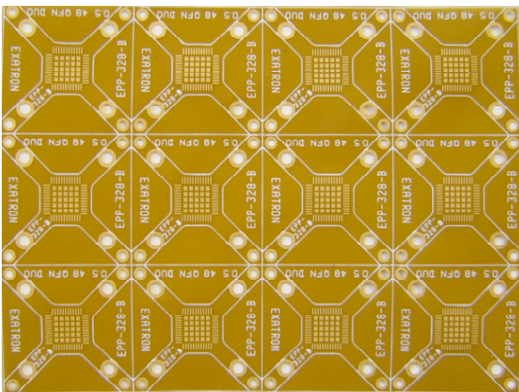
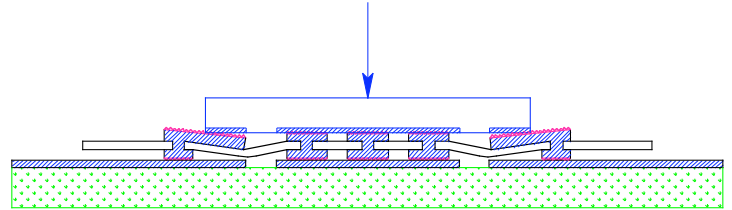
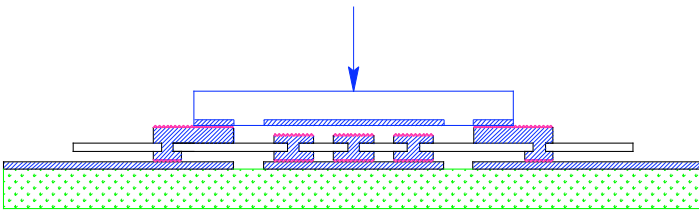
Bottom side lead contact plated to 2 oz.

Air Gap

Bottom side ground slug contact plated to 2 oz.

INITIAL MLF DEVICE - DUO INTERPOSER - DUT BOARD CONTACT

APPLY ADDITIONAL PRESSURE TO THE M DEVICE - DUO INTERPOSER - DUT BOARD CONTACT



DUO interposers are provided in sheet form or as individual complete test sockets. Even with just a one-piece order, we can easily adapt the DUO interposer to fit any rocker-type test socket footprint and tooling pin/bolt pattern.



Please visit our web site for additional information on the DUO interposer and other Exatron Particle Interconnect family of products.