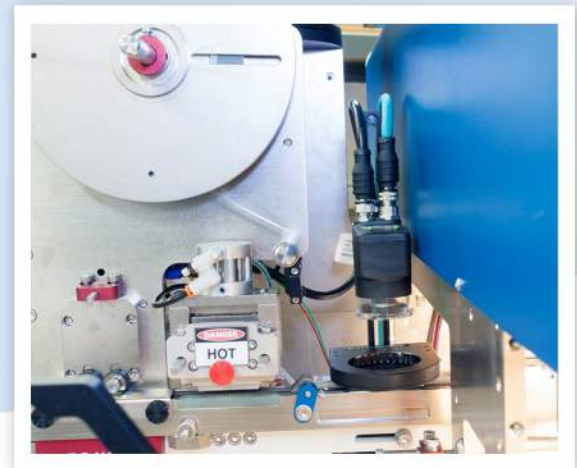
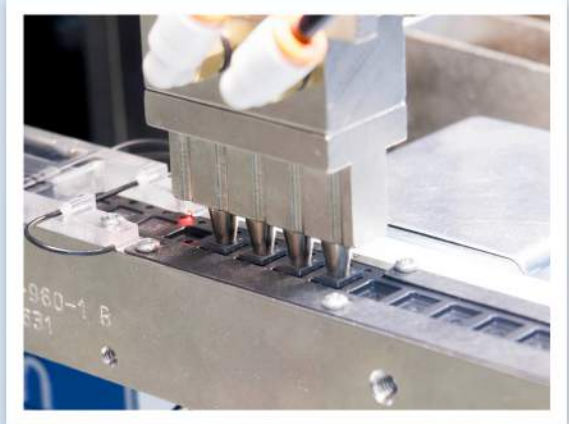


exatron MODEL 202

INTEGRATED PRODUCTION TAPE AND REEL MACHINE



Model 202 Tape and Reel
Mounted on Handler



- Built by Exatron. Integrates seamlessly with all model 900 and 8000 pick and place handlers.
- Designed specifically for automation.
- Fixed-width track with quick and easy changeover.
- Computer-controlled job set up.
- 8mm to 72mm standard tape width range. (120 mm special order)
- Fast PSA to thermal seal conversion.

- Easy to change and clean seal heads/blades.
- Out of cover tape sensor.
- Built-in machine vision standard:
 - Pin 1 orientation, empty/out of pocket, and upside down.
 - Many in pocket and OCR vision upgrades available.
- Intuitive diagnostic software.



2842 Alello Drive, San Jose, CA 95111
1-800-EXA-TRON 1-408-629-7600 www.exatron.com

exatron MODEL 202

INTEGRATED PRODUCTION TAPE AND REEL MACHINE

ADDITIONAL FEATURES:

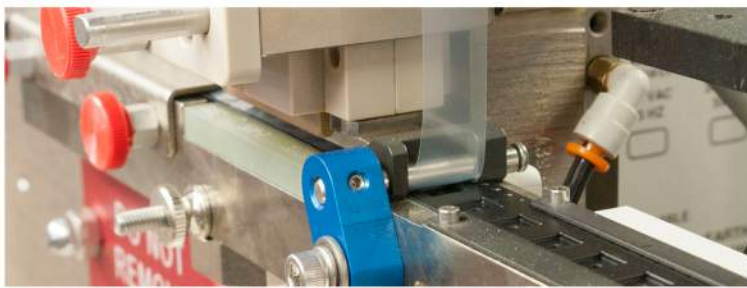
- Innovative carrier tape guide block aligns cover to carrier tape perfectly in seconds, guaranteed. No micro-adjustments needed. No wasted tape.
- Heavy duty powered take up reel with slack/tension switch.
- Optional label printer, automatically prints reel/box labels when reel is changed.
- PC controlled parameters:
 - Seal method (stamp or drag).
 - Seal timing, tape pitch, and speed.
 - Total filled pocket count.
 - Leader/trailer pocket count.
 - Vision settings.
 - +/- 2° C seal temperature control.
- **Tape width:** 8mm-72mm.
- **Tape pitch:** Computer controlled.
- **Output reel size:** 18cm, 33cm, or 56cm (7", 13", or 22")



Model 202 on an
8000 Series Handler



Model 202 on a
900 Series Handler



Cover Tape Guide Block



2842 Allelo Drive, San Jose, CA 95111
1-800-EXA-TRON 1-408-629-7600 www.exatron.com