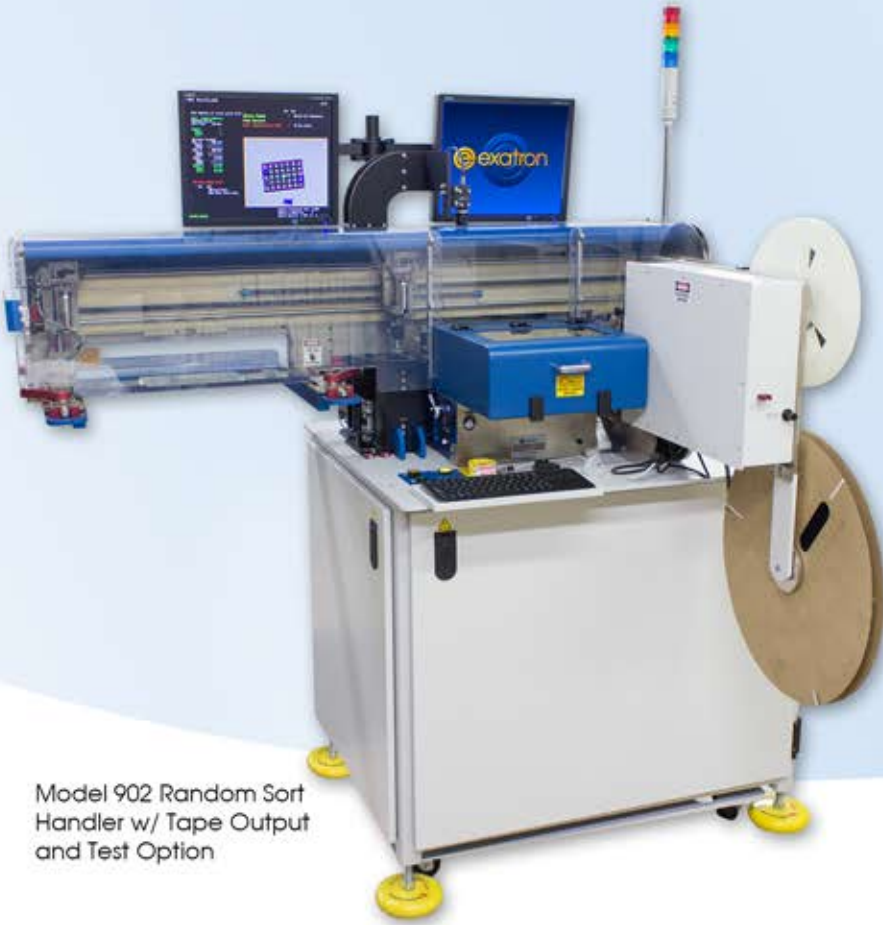


exatron RANDOM SORT HANDLER

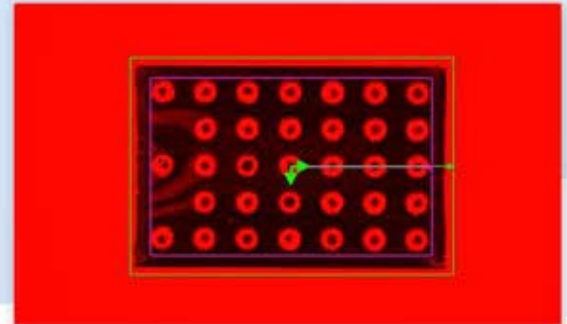
IDEAL FOR HIGH MIX, LOW VOLUME APPLICATIONS



Model 902 Random Sort Handler w/ Tape Output and Test Option



Top inspection locates and identifies devices



Bottom inspection determines device orientation and quality

- More effective than bowl feeder for high mix, low volume applications.
-Suited for devices 0.5 x 0.5mm to 2 x 2mm.
- Randomly assorted bulk devices are identified and output to tray or tape.
- Top and bottom-side vision.
- Rotating pickup head.
- In-tape inspection standard.
- Multiple test and input/output options available.



Devices are presented scattered on the input tray and sorted by device size to the output tray or tape



2842 Alello Drive, San Jose, CA 95111
1-800-EXA-TRON 1-408-629-7600 www.exatron.com

exatron RANDOM SORT HANDLER

FAST AND EFFICIENT SORTING OF BULK DEVICES

Specifications:

Power:	100-240 VAC 50/60 Hz @ 240 Watts
Air:	5.9 bar (85 PSI) @ 3 CFM clean, dry air
Operational Temp.	13-32°C (55-90°F)
Humidity:	35-90% RH non-condensing

System Features (as shown):

- 1 rotating pickup head and 1 double pickup head.
- 1 input and 1 output JEDEC tray.
- Large, removable test site dock. (as shown)
- Virtually "kit-less."
-Quick and easy changeover of bus stop, pickup heads, and test sockets.
- Top and bottom-side vision.
- Output tape and reel with in-pocket inspection standard.
- Windows 10-based GUI.
- Extensive built-in diagnostic and automation software, generated in-house at Exatron.
- Fully enclosed on all sides, doors electrically and mechanically locked.
- Heavy duty welded steel frame.
- RoHS compliant. Meets all ESD requirements. CE mark available.
- System designed, manufactured, and built in San Jose, CA.

Ongoing Support:

- World's easiest handler to self-service.
- Worldwide on-site service available.
- Handler self-calibrates on power up. No mechanical or electrical calibrations needed.
- Remote service, training, and software updates available via Internet.
- Spare parts typically ship within 24 hours ARO.
- Excellent, full-color documentation and extensive diagnostics provided.

Positioning System:

X-Y Drive System:	Servo motor-driven lead screws
X-Y Axis Resolution:	0.1mm (0.003")
X-Y Axis Max. Velocity:	122cm/s (48"/s)
Z Plunger:	Servo motor-driven lead screws
Z Axis Resolution:	+/- 0.1mm (0.003")
Z Axis Repeatability:	+/- 0.1mm (0.003")
Placement Force:	Up to 10kg (20 lbs) force with standard pickup heads
Theta Drive System:	Precision stepper motors
Theta Axis Resolution:	0.1°
Theta Axis Repeatability:	+/- 0.1mm (0.003")

Options:

Input/Output:

- Tape & Reel
- Tube
- Bowl Feeder
- Bulk
- Magazine

Test Interface:

- TTL handler port
- GPIB
- RS-232
- TCP/IP
- Ethernet
- SECS GEM

Vision:

- Pocket occupation
- Device orientation
- OCR/OCV
- 2D/3D lead/ball inspection
- 1D/2D data matrix read/verification
- Top and/or bottom-side vision
- Pocket occupation/orientation inspection standard with output tape

Laser:

- Mark in tray, no additional tooling
- Wide selection of OEM laser markers
-Solid-state, fiber, diode, and CO₂
- CDRH Class 1



2842 Alello Drive, San Jose, CA 95111
1-800-EXA-TRON 1-408-629-7600 www.exatron.com