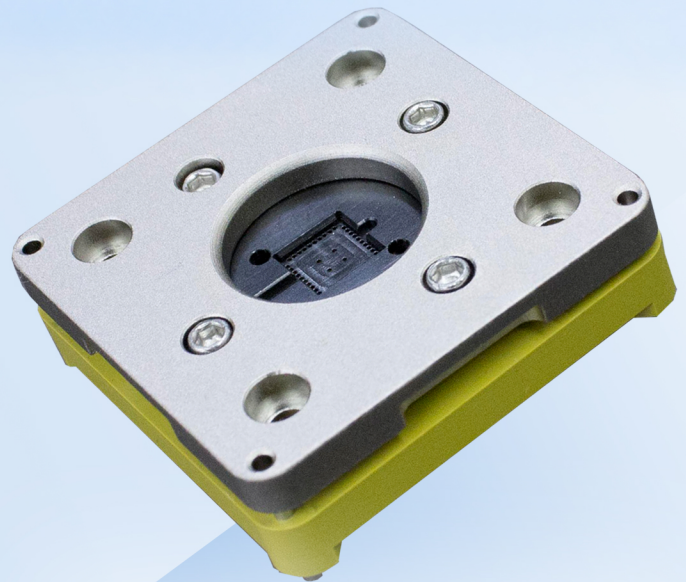


COPPERHEAD®

by  exatron

*A PRODUCTION
TEST SOCKET
SPECIFICALLY DESIGNED
FOR EXCEPTIONAL
THERMAL PERFORMANCE*



With its solid copper socket top, Exatron's Copperhead thermal test socket significantly reduces calibration deltas, cuts typical soak times in half, increases temperature stability, and allows for higher wattage control than traditional sockets.

The exact same socket can be used with all Exatron test solutions, from benchtop hand test to high-volume automated handlers.



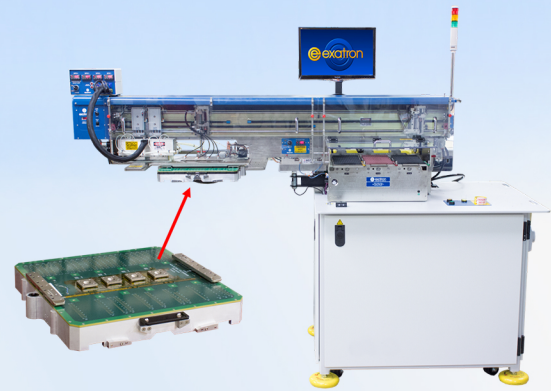
2842 Aiello Drive, San Jose, CA 95111
1-800-EXA-TRON 1-408-629-7600 www.exatron.com

REDUCE THERMAL LOSS DURING TEST

Using an Exatron Model 900 Series thermal test handler, devices were tested in a competitor's sockets and in Exatron Copperheads.

*Same package. Same tester. Same conditions.
Different sockets.*

The Copperhead routinely outperformed the competitor in thermal loss and calibration deltas.



Model 903 Thermal Test System



Actual Test Temperatures - QFN with Embedded Thermocouple

COMPETITOR

| DUT Temp °C | Head Temp | Δ |
|-------------|-----------|--------|
| +155 | 166 | 11.5° |
| +80 | 85 | 5.95° |
| +68 | 74 | 5.6° |
| 0 | -5 | 5.73° |
| -20 | -29 | 9.95° |
| -40 | -55 | 15.4° |
| -55 | -80 | 26.03° |

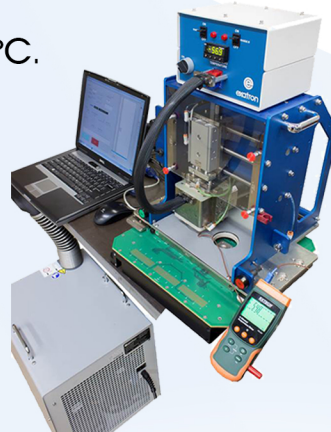
EXATRON

| DUT Temp °C | Head Temp | Δ |
|-------------|-----------|-------|
| +155 | 157 | 1.2° |
| +80 | 82 | 0.48° |
| +68 | 70 | 0.68° |
| 0 | -1 | 0.18° |
| -20 | -23 | 4.2° |
| -40 | -46 | 6.75° |
| -55 | -64 | 9.8° |

INCREASE TEMPERATURE STABILITY

Devices were tested at five different temperatures for four hours each on an Exatron PET-5C equipped with a Copperhead socket and Exatron's Wide Range Thermal Head (WRTH).

Even at the most extreme temperatures, temperature deviation was never greater than 1°C.



PET-5C Test Setup

EXATRON TEMP. DEVIATION

| Target Temp °C | Avg Set Temp | Avg WRTH Temp | WRTH Max | WRTH Min |
|----------------|--------------|---------------|----------|----------|
| +155 | +158 | +155.1 | +155.2 | +154.8 |
| +75 | +76.7 | +75.4 | +75.5 | +75.3 |
| -20 | -18.4 | -19.9 | -19.6 | -20.2 |
| -55 | -57 | -54.5 | -54.1 | -54.9 |
| -75 | -77.6 | -74.7 | -74.4 | -75.2 |

Contact Exatron
for more info
on WRTH
at sales@exatron.com