

exatron MODEL 802 LID

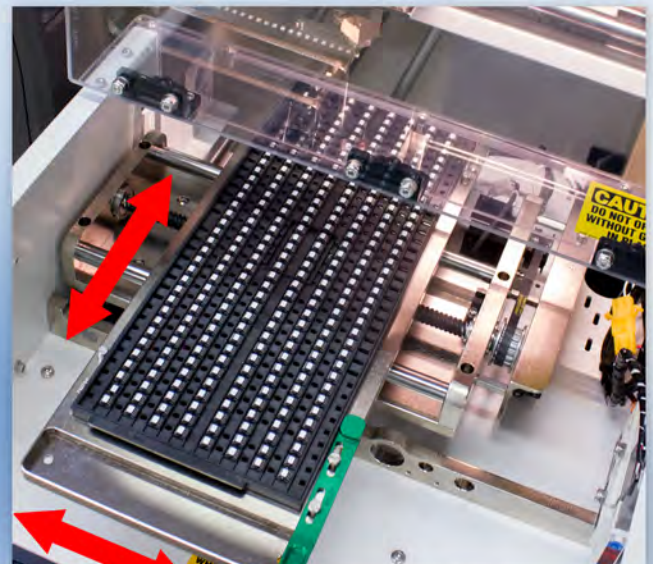
TABLE TOP LABEL/INK DOT APPLICATION HANDLER



- Motorized JEDEC tray carriage moves on both X and Y axes and allows fast, precise printed label or ink dot application.
- Quick and easy changeover from labeling to inking.
 - Simply attach the ink pen holder to the pickup head.
- Fits standard off the shelf Uchida ink pens. Customer choice of colors.
- Features an on-the-fly pen cleaning station.
- Based on popular Model 802 test handler.
(Contact Exatron for details)
- Table-mounted option available.
- Designed, manufactured, and built in San Jose, CA USA.



Pickup Head at Labeler



Motorized XY JEDEC Tray



2842 Alello Drive, San Jose, CA 95111
1-800-EXA-TRON 1-408-629-7600 www.exatron.com



MODEL 802 LID

TABLE TOP LABEL/INK DOT APPLICATION HANDLER



Inking Changeover Kit



Ink Pen Attachment Mounted

Specifications:

Power: 120 /220 VAC 50/60 Hz

Air: 5.5 bar (80 psi) - 2 CFM clean, dry air
-No air required for ink dot mode.

Units per Hour:

Labeling = up to 2,000 uph

Inking = up to 4,000 uph

Positioning System:

X gantry, XY tray, and Z pickup head are powered by servo motor-driven lead screws.

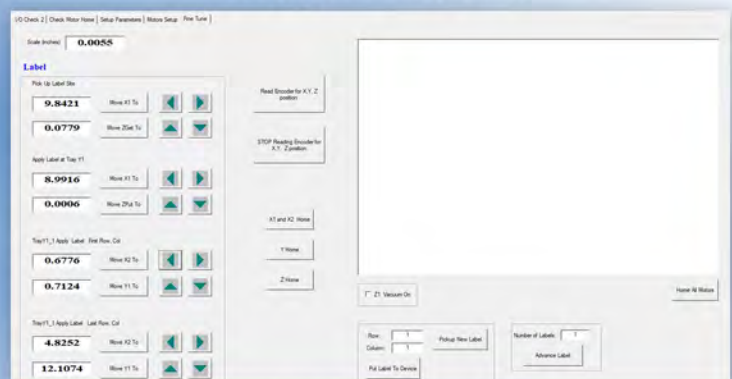
X and Y axis resolution = 0.1 mm (0.003")

Handler Features:

- Fits one standard JEDEC tray or 2" or 4" waffle packs in JEDEC tray frames.
- Separate label and ink dot .exe files allow relatively few settings changes.
- Windows 10-based user interface.
- Extensive built-in diagnostics.



Inked and Labelled Devices



Intuitive Windows 10-based GUI



2842 Alello Drive, San Jose, CA 95111
1-800-EXA-TRON 1-408-629-7600 www.exatron.com